

Chene-Trombly Park

On April 26, 1938, a neighborhood meeting was held at the home of Mrs. Edgar Hallead to discuss ways of obtaining recreational facilities for their community and children.

Mrs. Hattie Chene donated the use of a parcel of land, located at Ridgemont and Mack Avenue, to the newly organized group — The Grosse Pointe Woods Community Club — in memory of her mother and father, Mrs. and Mrs. Columbus Trombly. Mrs. Hallead became the Club's first president.



Chene-Trombly Park

Later, Mrs. Chene deeded the land to the Village of Grosse Pointe Woods which later became the City of Grosse Pointe Woods. Mrs. Crystal Gregory, then president of the Club, appointed Mrs. Hallead, Mr. A.A. Ghesquiere and Mrs. Howard Iiams to the Building Committee. With contributions of money and volunteer help from members of the community, the Community Club Building

opened in 1941. A five-room addition was added in 1952 through the efforts of Mr. Mervyn Gaskin and Mr. Leon Ratcliffe.

For many years, the activities of the club included a nursery school, dancing classes and supervised recreational activities, and then the emphasis shifted to group work, informal education and further recreational activities.

As time went on, recreational activities were seen as a municipal function and were taken over by a city Recreation Commission. The Community Club then moved to bring to a close its long years of service which had been financed by the local community and by United Community Services. When the building fell into disrepair and was not adaptable for the recreational needs of the City, it was demolished, though the Chene-Trombly playground is still maintained and used to this day.

This brochure was made possible with funds earned by Mayor George S. Freeman at the 1988 *Mayor's Work Day* at DisneyWorld in Orlando, Florida.

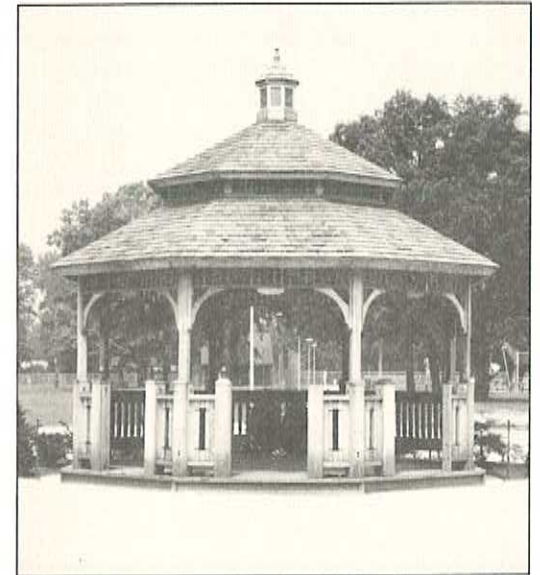
Prepared by the
Grosse Pointe Woods Historical Commission



City of Grosse Pointe Woods

20025 Mack Plaza
Grosse Pointe Woods
Michigan 48236
(313) 343-2440

Take a Walk In the Woods



Ghesquiere Park

A guide to parks in the
City of
Grosse Pointe Woods

Ghesquiere Park

In 1945, the site for the present Municipal Building and the city's second largest park was purchased for \$42,500. It originally consisted of 44.6 acres but, three years later, 12.6 acres of what was then called Mack Park, lying in Gratiot Township, was sold for \$15,600.

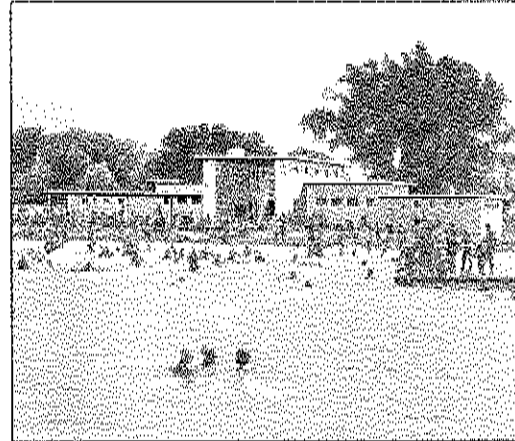
Ghesquiere Park was named for Alois A. Ghesquiere, President of the Village of Grosse Pointe Woods from 1939, when it changed from the Village of Lochmoor, until it became the City of Grosse Pointe Woods in 1950.

Ghesquiere Park sits directly behind the City Hall and it offers various sports activities as well as areas to stroll and sit in a natural wooded setting. The centrally located gazebo provides shelter for skaters in winter and a bandstand for summer concerts in the park.

Lake Front Park

Covering approximately 53 acres, the Lake Front Park is the largest of our municipal parks and is the pride of the community. It is located at 23006 East Jefferson, at the foot of Marter Road, in St. Clair Shores, next to the Edsel & Eleanor Ford House.

In 1946, when the Village of Grosse Pointe Woods was just a small hamlet with a population of only 6,610, a master park plan was created. This plan determined the need for park lands for the growing area. Population projections indicated the city would grow to 20,000 residents in twenty year's time.



Lake Front Park

A generous offer was made to the City by Eleanor Clay Ford, for the option to purchase a portion of her estate for the proposed park site. Wasting no time, a special election was held on March 10, 1947, allowing taxpayers to decide whether or not to buy the land. The acquisition was approved by a 962 to 460 vote and, on February 26, 1948, the City of Grosse Pointe Woods took title to the Lake Front Park for a total cost of \$60,000.

The Lake Front Park offers a variety of year-round recreational opportunities for all ages. Swimming, boating, racquet games, playgrounds for tots and picnic areas are popular attractions of this beautiful park on Lake St. Clair.



Sweeney Park

Sweeney Park

Sweeney Park is a small, neighborhood play area designed primarily for children under 12 years of age. It covers two and three-quarter acres and public access is through Ford Court, Baltree Court, Clairview Court and Fair Court.

At the time of development, title to this property was held by the Ballantyne and Torrey families. Later, the property was acquired by Mr. John S. Sweeney who planned the park so that it would be of benefit to the families in the area. This park is named after its developer.