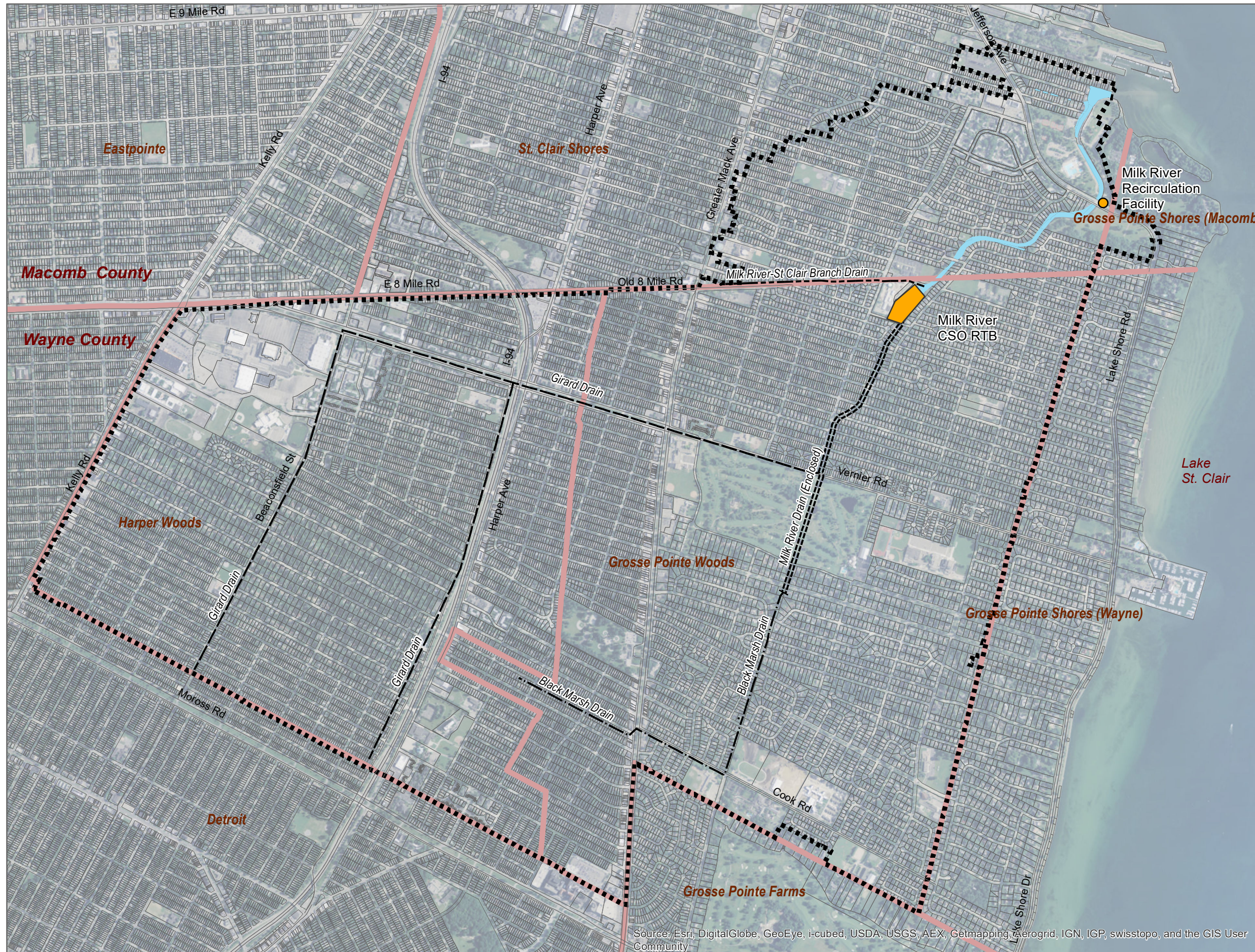
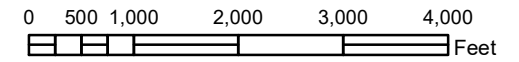


Milk River Intercounty Drain Drainage District



Legend

- ==== Milk River Drain (Enclosed)
- Milk River-St Clair Branch Drain
- Girard Drain
- Black Marsh Drain
- Milk River Drain (Open)
- ⬢ Project Service Boundary
- Municipal Boundary

Area to be Served by the
Priority 1B and Select
Improvements Project



Source: Esri, DigitalGlobe, GeoEye, i-cubed, USDA, USGS, AEX, Getmapping, Aerogrid, IGN, IGP, swisstopo, and the GIS User Community